

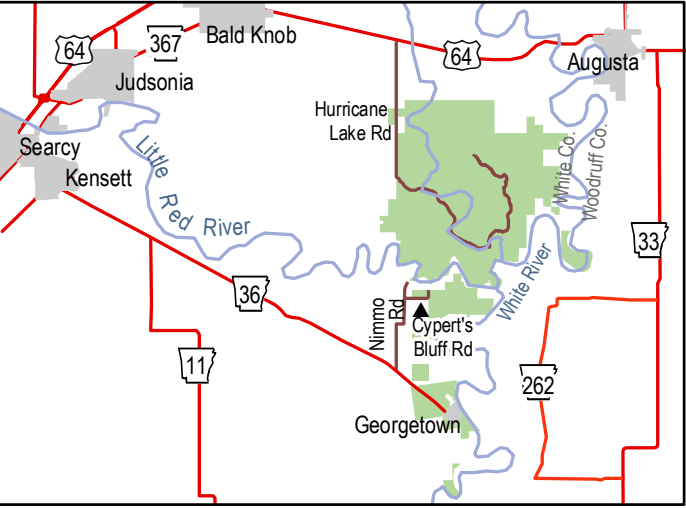
HENRY GRAY/ HURRICANE LAKE WMA

White County, Arkansas



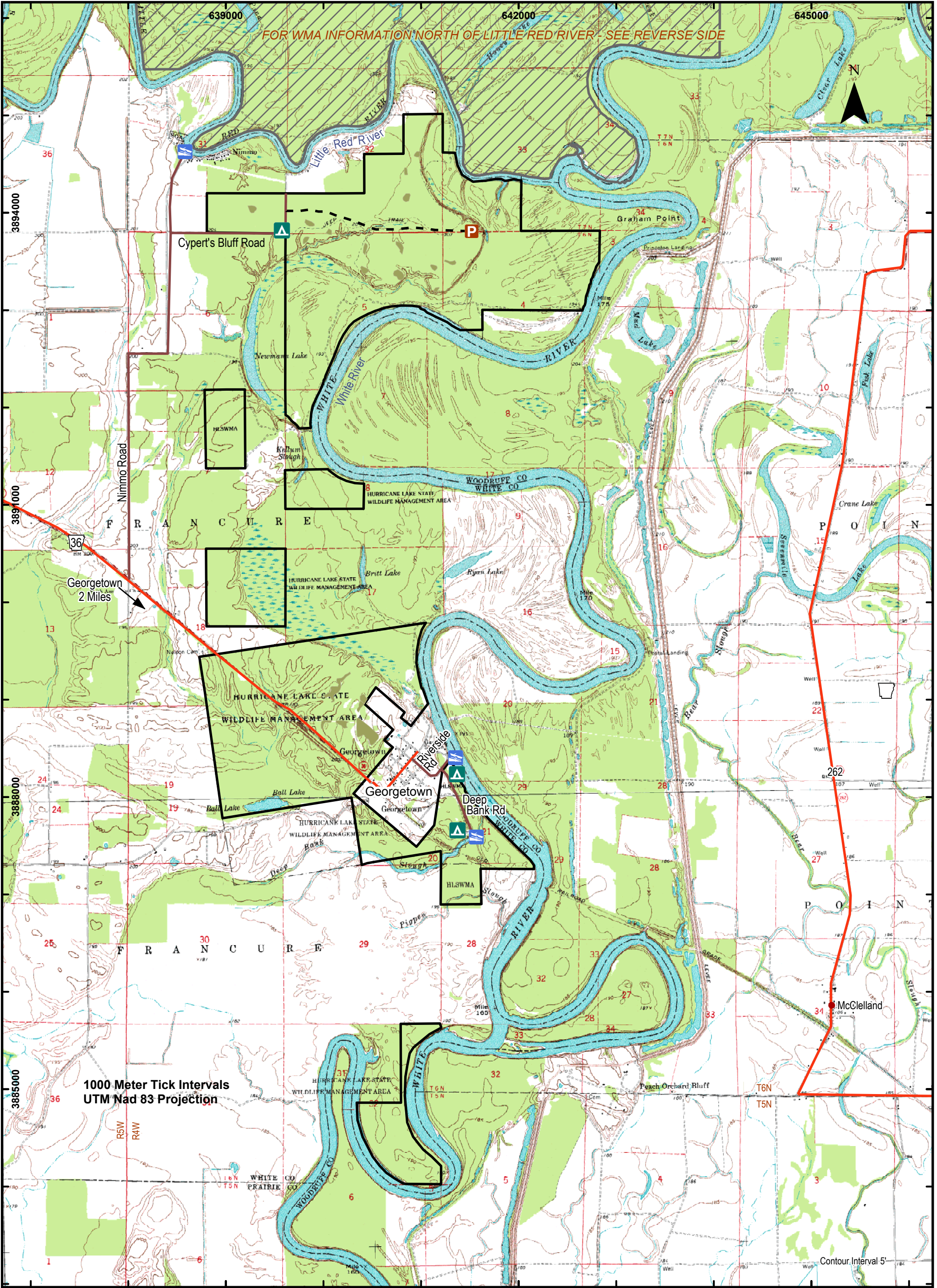
- Improved Camping
- Primitive Camping
- Paved Boat Ramp
- Unpaved Boat Ramp
- Handicap Access
- Archery Range
- Headquarters
- Parking
- Wildlife Opening
- Improved Road

Henry Gray/Hurricane Lake WMA consists of 17,000 acres of prime bottomland hardwoods habitat. There are numerous sloughs and flats throughout the area and several ridges. Elevation ranges from 190 to 210 feet above sea level. The White River bounds the WMA on the east and the Little Red River separates approximately 4,000 acres from the main body of the area. A major tributary, Glaise Creek, as well as several oxbow lakes including Big Hurricane, Little Hurricane, Big Bell, Little Bell, Whirl Lake, Honey Lake, Big Brushy and Mallard Pond are also located on the area.



This map was created by the GIS Division of the Arkansas Game & Fish Commission by Pam Starks & Scott Lane 7/2004. Field Data Provided by Rob Willey, Wildlife Management Division. Base data taken from USGS 7.5 minute topos and 2000/2001 aerial photos.

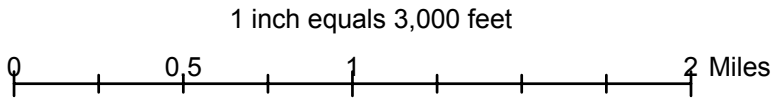
Every attempt has been made to provide accurate information about our areas. However, due to a wide range of factors, we do not guarantee the content accuracy, or completeness of this map. It is intended **For Reference Purposes Only**. Always consult the Arkansas Game & Fish Commission Regulation Guide and adhere to boundary signs and other on-site indicators. Additional information can be obtained from the East Central Office toll-free at 877-734-4581.



HENRY GRAY/HURRICANE LAKE WMA

South of Little Red River

- Primitive Camping
- Paved Boat Ramp
- Parking
- Wildlife Opening
- Improved Road
- Unimproved Road



FOR REFERENCE PURPOSES ONLY

