

2016 Black Bear Harvest

Arkansas black bear hunters harvested 440 bears during the 2016 season.

Season Framework

Arkansas's 2016 black bear seasons were:

Bear zone 1 and 2	
Sept. 24 - Nov. 30	-- Archery
Oct. 15-23	-- Muzzleloader
Nov. 5-6	-- Modern gun youth hunt
Nov. 1-4, 7-30	-- Modern gun
Bear zone 5	
Nov. 26 -- Dec 4	-- Modern gun
Bear zone 5A	
Nov. 19 -Dec. 4	-- Modern gun

As in previous seasons, the use of dogs to hunt bears was prohibited. Baiting was allowed on private land in zones 1, 2, 5 and 5A from 30 days before the opening of bear season until the end of bear season. The season bag limit was one bear by any method. Bear Zone 1 (including all WMAs within Zone 1) the quota was 205 bears for the months of September and October and 250 bears total for all seasons combined. Bear Zone 2 the quota was removed. In bear zone 5 the quota was 10 bears and in bear zone 5A the quota was 5 bears.

Results

Four hundred forty (440) bears were legally harvested during the 2016 season. Two hundred ninety seven males (68%) and 143 females (32%) were harvested statewide. Most of the bears were harvested with archery equipment at 368 (84%) followed by modern gun 56 (13%) and muzzleloader 16 (3%).

Bear zone 1 produced 259 (59%) of the total harvest (Table 1). There were 178 males and 81 females harvested in Zone 1. Bear zone 2 provided 38 percent (169) of the total harvest. There were 112 males and 57 females harvested Bear Zone 2. Bear zones 5 and 5A produced 12 bears or 3% of the total harvest.

Sixty one bears (14%) were killed on public land and 379 (86%) were killed on private land. The top five counties for bear harvest were: Newton, Yell, Madison, Johnson and Washington (Figure 1).

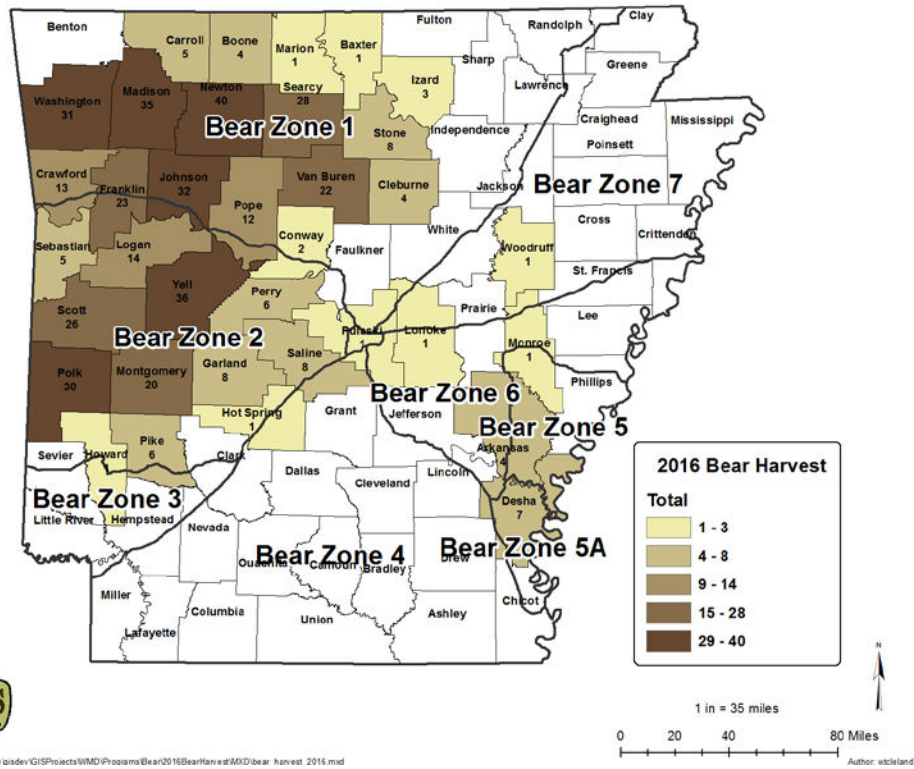
Discussion

The 2016 statewide bear harvest was a tremendous improvement over the 2015 season. The increased in harvest was no doubt attributed to lack of hard mast availability making more bears susceptible to harvest over bait. This is reflected by the fact that 86% of the bears were harvested on private land. Bear zone 1 maintained a harvest quota of 250 bears total (205 Archery, 45 Modern Gun). The bear zone 2 quota was removed. Bear Zones 1 and 2 moved to

the 4th Saturday in September as the archery opener. The earlier opener on a Saturday probably provided better hunter success early.

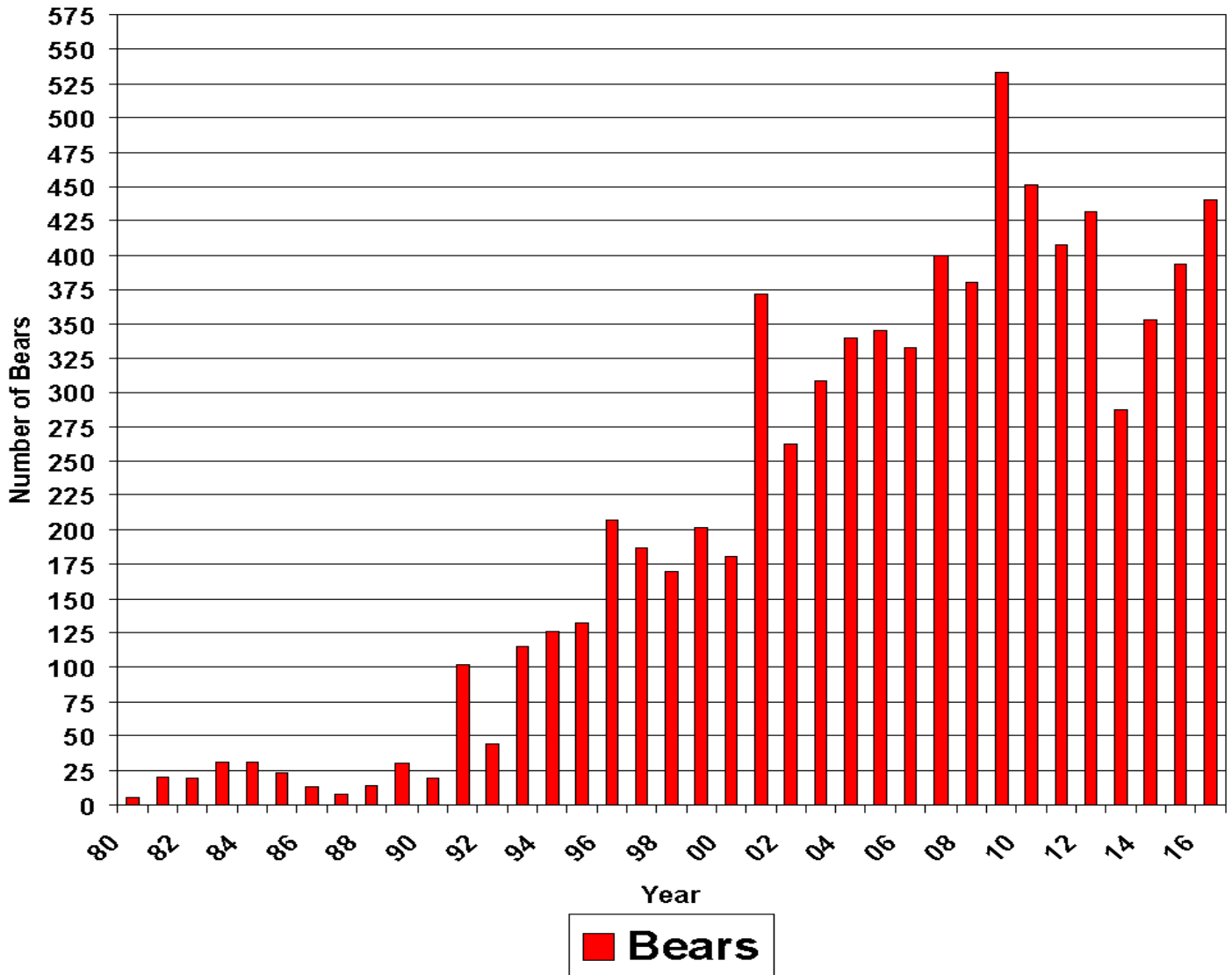
**

Figure 1. Arkansas black bear harvest by county, 2016.



Document Path: \\afco\dev\gisdev\GIS\Projects\WMD\Prosems\Bear\2016\Bear\Harvest\MXD\bear_harvest_2016.mxd

Figure 2. Arkansas black bear harvest, 1980-2016.



**

Table 1. Arkansas black bear harvest by bear zone, sex, and method, 2016.

	<i>Total Harvest</i>	<i>Male</i>	<i>Female</i>	<i>Archery</i>	<i>Muzzle-loader</i>	<i>Modern Gun</i>
<i>Zone 1</i>	259	178	81	238	3	18
<i>Zone 2</i>	169	112	57	129	13	27
<i>Zone 5</i>	11	6	5	1	0	10
<i>Zone 5A</i>	1	1	0	0	0	1

Table 2. Arkansas black bear harvest by county and method for 2016.

<i>County</i>	<i>Total Harvest</i>	<i>Archery</i>	<i>Muzzleloader</i>	<i>Modern Gun</i>
<i>Arkansas</i>	4	1	0	3
<i>Baxter</i>	1	0	1	0
<i>Boone</i>	4	4	0	0
<i>Carroll</i>	5	4	1	0
<i>Cleburne</i>	4	4	0	0
<i>Conway</i>	2	2	0	0
<i>Crawford</i>	13	11	0	2
<i>Desha</i>	7	0	0	7
<i>Franklin</i>	23	21	0	2
<i>Garland</i>	8	5	3	0
<i>Hot Springs</i>	1	0	0	1
<i>Howard</i>	1	1	0	0

**

<i>Izard</i>	3	3	0	0
<i>Johnson</i>	32	30	0	2
<i>Logan</i>	14	12	1	1
<i>Lonoke</i>	1	0	1	0
<i>Madison</i>	35	34	0	1
<i>Marion</i>	1	1	0	0
<i>Monroe</i>	1	0	0	1
<i>Montgomery</i>	20	15	2	3
<i>Newton</i>	40	35	1	4
<i>Perry</i>	6	5	1	0
<i>Pike</i>	6	6	0	0
<i>Polk</i>	30	21	1	8
<i>Pope</i>	12	12	0	0
<i>Pulaski</i>	1	1	0	0

**

<i>Saline</i>	8	5	0	3
<i>Scott</i>	26	20	1	5
<i>Searcy</i>	28	25	0	3
<i>Sebastian</i>	5	5	0	0
<i>Stone</i>	8	8	0	0
<i>Van Buren</i>	22	22	0	0
<i>Washington</i>	31	27	0	4
<i>Woodruff</i>	1	1	0	0
<i>Yell</i>	36	27	3	6

**

